

A Network for Education

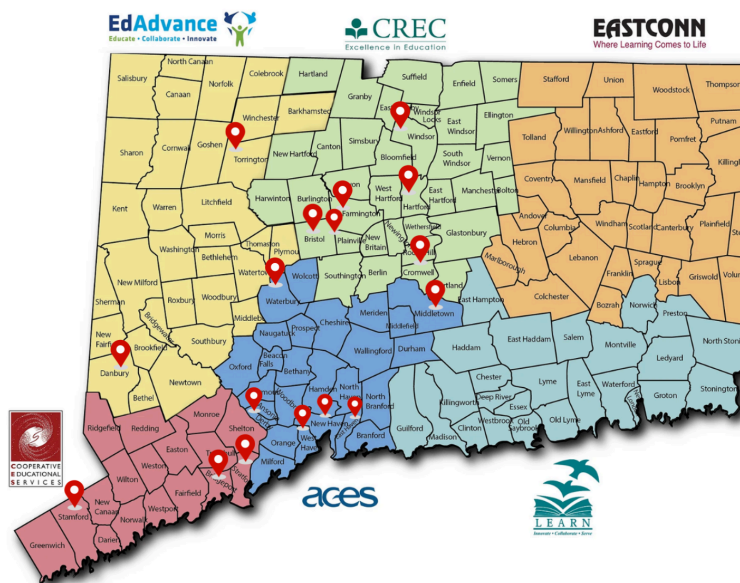
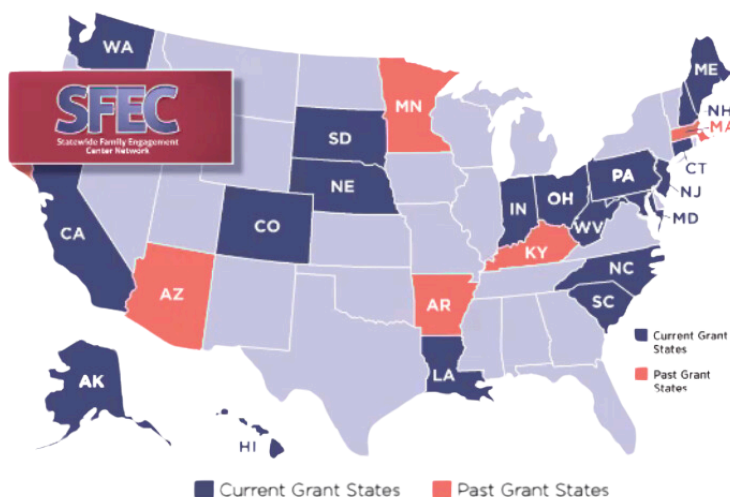
Connecticut's Definition for Family Engagement

Family Engagement is a full, equal, and equitable partnership among families, educators and community partners to promote children's learning and development from birth through college and career.



The **goal** of the Connecticut Family School Partnerships (CFSP) is to improve student social, emotional and academic outcomes through strong family, school and community partnerships.

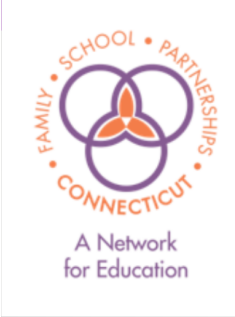
SFEC Network - Twenty Active SFEC Grants



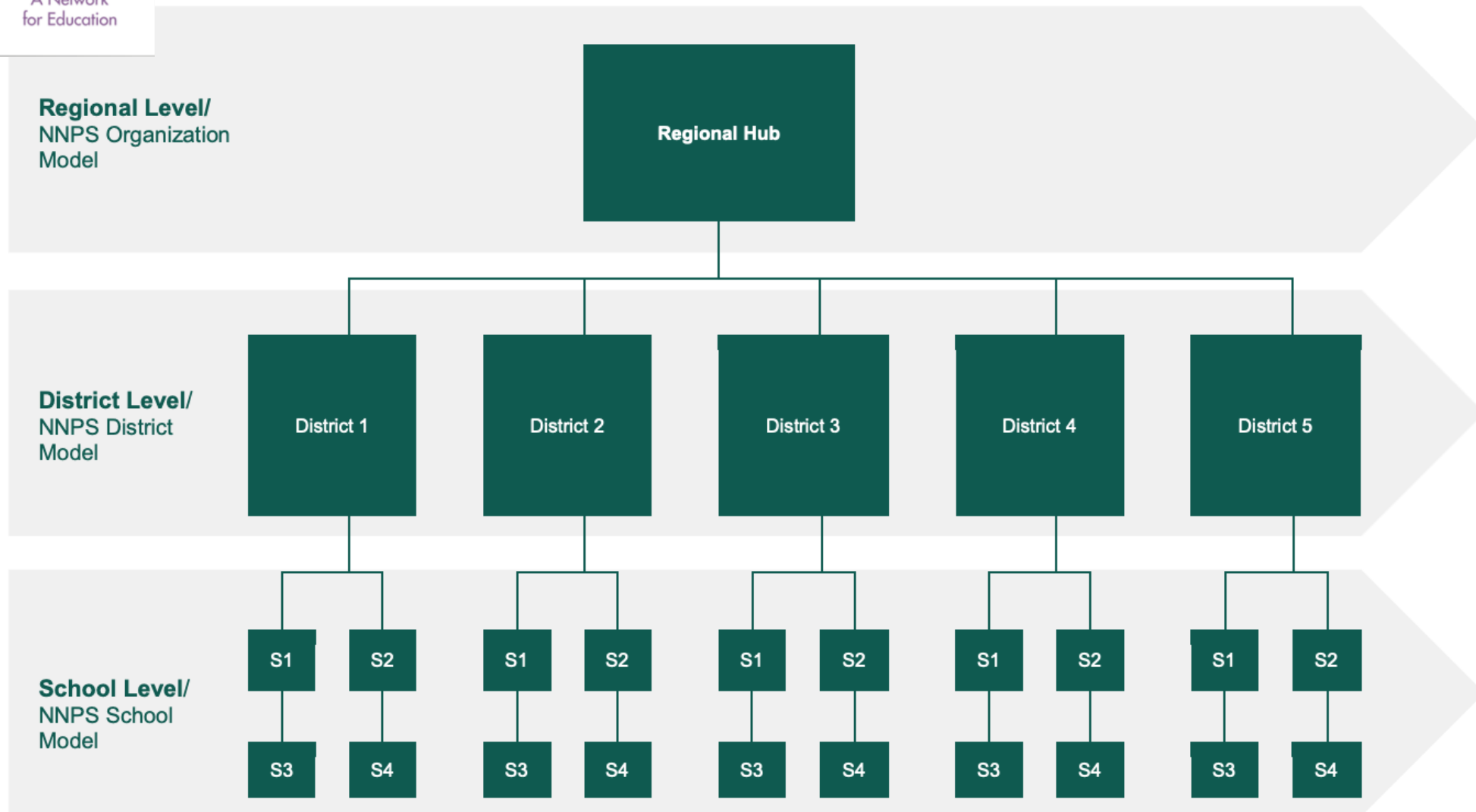
4
Regional Partners

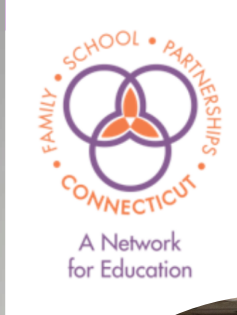
18
School Districts

39
Advisory Members



Implement Statewide Regional Approach





Statewide Implementation of Evidence-based Family Engagement Practices



Action Teams



Welcoming Walkthroughs



Home Visiting



Welcoming Walkthroughs



Connecticut's Family Engagement Definition and Framework

Full, Equal, and Equitable Partnerships!

CONNECTICUT DEFINITION FOR FAMILY ENGAGEMENT

Family Engagement is a full, equal, and equitable partnership among families, educators and community partners to promote children's learning and development from birth through college and career.



Goal

The goal of the Connecticut Family School Partnerships (CFSP) is to improve student social, emotional and academic outcomes through strong family, school and community partnerships.

Who We Are

The Connecticut Family School Partnerships (CFSP) is made up of five diverse educational and family advocacy partner agencies: National Network of Partnership Schools (NNPS), Connecticut Parent Advocacy Center (CPAC), Capitol Region Education Council (CREC), Connecticut State Department of Education (CSDE) and the State Education Resource Center (SERC).

What We Do

Implement a regional approach to reinforce Connecticut Definition and Framework for Family Engagement to:

- Promote shared leadership between schools and families.
- Establish a robust advisory council of State, Local and Community partners
- Build the capacity of families through direct services and training
- Build the capacity of schools and community agencies through professional development.



Join Our Circle!

✉ CFSP@crec.org

f Follow Us!

🌐 www.ct-fsp.org



Family Engagement Cross-Agency Partnerships



CFSP Advisory Council



District Leaders