

E F F E C T



Engagement for Families, Educators, Community Together

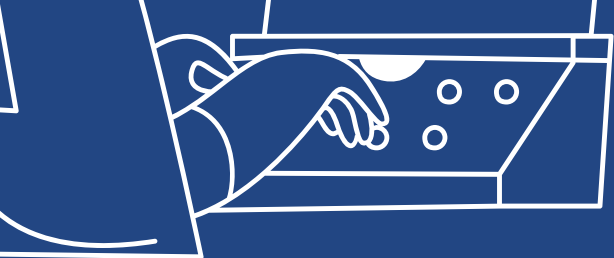
Engagement for Families, Educators, Community Together (EFFECT)

A Year in Review: 2024

Introduction

- The **Statewide Family Engagement Centers (SFEC)** initiative is a federally funded program to strengthen partnerships between families, educators, and communities to improve student outcomes.
- **Engagement for Family, Educator, & Community Together (EFFECT)** is the Indiana SFEC project that fosters collaborative relationships to support student success.
- The overarching purpose of SFEC and EFFECT is to empower families as key partners in education, enhance educator capacity for family engagement, and build sustainable community networks that support equitable opportunities for all students.
- These goals are being achieved through evidence-based practices, professional development, and tailored resources that address the unique needs of schools, families, and communities.

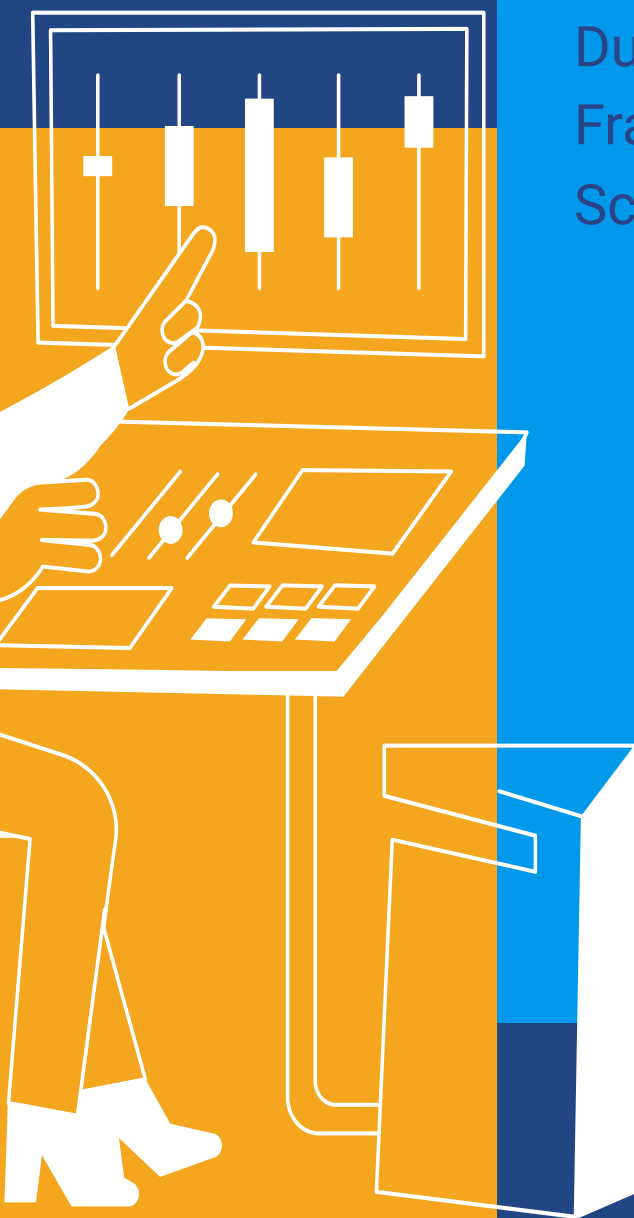
DISCLAIMER: The contents of this annual program infographic (year one) were developed under a grant from the U.S. Department of Education (Department). The Department does not mandate or prescribe practices, models, or other activities described or discussed in this document. The contents of this report may contain examples of, adaptations of, and links to resources created and maintained by another public or private organization. The Department does not control or guarantee the accuracy, relevance, timeliness, or completeness of this outside information. The content of this report does not necessarily represent the policy of the Department. This publication is not intended to represent the views or policy of, or be an endorsement of any views expressed or materials provided by, any Federal agency. [89 FR 70333, Aug. 29, 2024]. Solutions Institutional Review Board (IRB) Exempt Study 45CFR46.104(d).



Indiana SFEC defines **family engagement** as a dynamic collaboration among students, families, educators, and community members to promote children's learning and full development. This is accomplished through trust relationships, co-created goals, shared leadership, a welcoming community environment, and fully accessible resources.

Guiding Framework: The Dual Capacity-Building Framework for Family-School Partnerships

[The Dual Capacity-Building Framework for Family-School Partnerships](#) (Mapp & Bergman, 2019) outlines the conditions and capacities needed to forge strong bonds between educators and families. It emphasizes the importance of trust, culturally responsive practices, and systemic support. Guided by this Framework, the EFFECT project focused on building capacity among families, school staff, and community partners to foster stronger family-school partnerships.

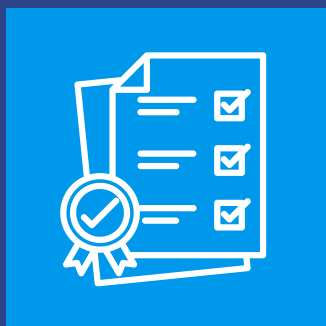


Statewide Family Engagement Center & Five Model Sites

To build capacity for systemic family engagement, the Indiana Statewide Family Engagement Center (IN-SFEC) selected five school corporations to develop into model sites. The five school corporations are Bartholomew Consolidated School Corporation, Gary Community School Corporation, Goshen Community Schools, MSD Warren Township, and Perry Central Community Schools Corporation, representing the state: from north to south, from urban, suburban, county seat, to rural, from majority Black, majority Hispanic, to majority White. All sites have selected topics with evidence-based family engagement strategies to measurably impact student attendance.



Indiana Statewide Family Engagement Center (IN-SFEC) Year One Key Highlights



- Established a strong foundation for systemic family-school engagement in Indiana.
- Exceeded initial project goals and delivered high-impact activities.
- Collected valuable baseline data to guide future efforts.
- Identified opportunities to strengthen broader family engagement and improve home visits.
- Highlighted disparities across school levels and demographic groups that need addressing.
- Positioned to build on successes and create lasting systemic change to improve educational outcomes for students, families, and schools.

Year One Achievements Through IN-SFEC and All Five Model Sites



During the first grant year, across all five model sites, EFFECT engaged **4,872** parents through **50** high-impact family engagement activities. Ninety percent (**90%**) of parents who provided feedback reported improved capacity to collaborate with schools and service providers to support their children's needs. Additionally, there were **27** high-impact activities for school staff and **74** statewide activities, including advisory committee meetings. Among staff who provided feedback, **94%** enhanced their capacity for effective family-school engagement.

Year One Key Activities in Five Model Sites






- Created a regional stakeholder group (RSG).
- Provided opportunities for site family engagement coordinators to attend multiple statewide capacity-building events and activities.
- Developed a dedicated family engagement webpage.
- Created year one family engagement video.
- Implemented the first annual survey of families and staff members.
- Hosted various LEA-level family engagement activities and events.

IN-SFEC and All Five Model Sites






In the first year, we have witnessed promising growth and success across various family-school engagement efforts.








Family Engagement Activities Attendance

-  Family Member Attendees: **4,872**
-  School Administrator Attendees: **138**
-  School Staff Attendees: **448**
-  Community Partner Attendees: **113**


Annual Survey Implementation

-  Family survey response total (in both Spanish and English): **1,378**
-  **75%** of the responses are from families with pre-k to 6th-grade students
-  School staff survey response total: **752**
-  **73%** of the school staff survey responses were from teachers
-  **81%** of the family survey goal and **20%** of school staff survey goal were met

Overall Key Findings

-  Families are more confident in supporting their children's learning and development than participating in family-school engagement activities.
-  School staff recognize the importance of family-school engagement and need to increase the capacity to effectively implement it.
-  Families are more likely to be satisfied with family-school communication than school staff.
-  Enhanced strategies are recommended to improve home visits.
-  Family-school engagement varied by school level and race/ethnicity groups.

Family Engagement Website

-  This [website](https://insource.org/efect/training-and-resources/) includes the contact information of all family engagement liaisons and other resources for families.

<https://insource.org/efect/training-and-resources/>

